



Telangana Inclusive Livelihoods Program

**Empowering Poorest of the Poor households through
Transformative Livelihood Interventions**

**Smt. D. Divya, IAS
Chief Executive Officer,
Society for Elimination of Rural Poverty**



Graduation Approach

A combination of **comprehensive**, **multi-dimensional**, **sequenced** and **time bound** support that create a 'big push' to propel people on a pathway out of extreme poverty

Households Receive



Asset



Basic Needs



Coaching



After 2 Years



Basic Needs Met

- Consistent, nutritious meals
- Connections to existing social services (schools, etc)



Financial Inclusion

- Saving regularly
- Able to lend or borrow cash



Livelihoods Active

- Stable and growing livelihoods
- Increasing asset value and income sources



Social Empowerment

- Increased decision making power
- Attending community activities



Long-Term Impact



Long-Term Pathway out of Extreme Poverty

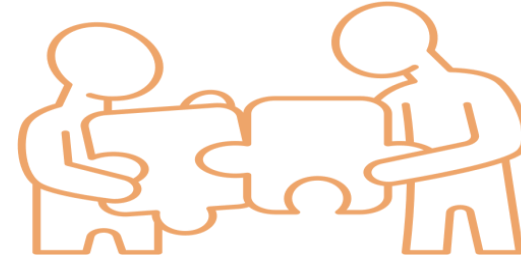
Critical Program Delivery mechanisms



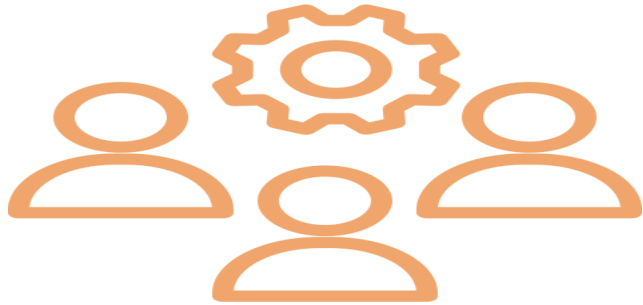
Satat Jeevikoparjan Yojana (Bihar) - Impacts



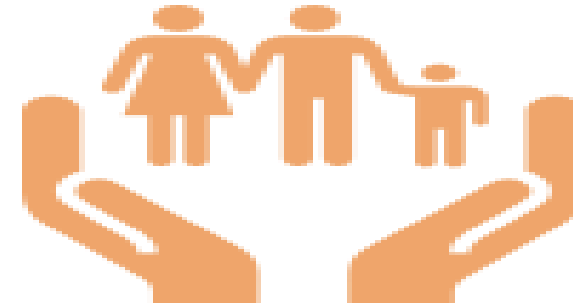
98% participants now have two meals a day



Around 99% participants satisfied with the services of the MRPs/graduation coaches



About 90% participants confident to run their enterprises within one year of coaching



Participants safeguarded from the worst economic shocks of the pandemic

TGILP approach: Entitlements



Identity (AADHAR)



Food Security (Ration Card)



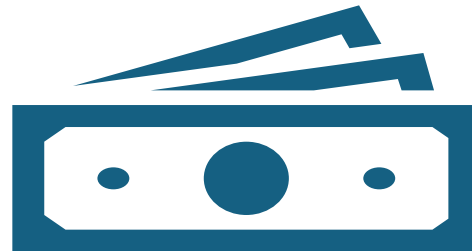
Health (Aarogyasri)



Education (Schooling)



Job card



Pensions



Housing



Financial Inclusion (Bank account)



TGILP approach: Financial Inclusion

- Financial Literacy Training
- Encouragement of saving habit
- Health and Life insurance
- Credit/Subsidy awareness

TGILP approach: Livelihoods promotion



Micro-Planning



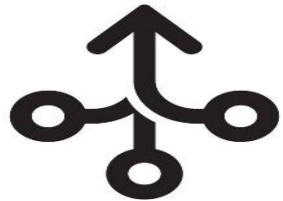
**Livelihood Gap
Assistance Fund**



Capacity Building



Coaching



**Convergence with
Schemes**



Livelihoods Grounding



Graduation of HHs

TGILP approach: Coaching

Household visits and group coaching with smaller caseload

Reinforcement of specialised livelihood training

Progress monitoring towards graduation

Resource linkages in community

Special Initiatives under TGILP

**Climate
Vulnerability
Assessment**

**Localised solutions
for Climate change**

**Climate proof
livelihood models**

**Financial
Instruments for
derisking climate
change**

**Community led
adaptation plans**

Key Strategies under TGILP



Specialized Interventions for PVTGs

Address traditional lifestyles, geographic isolation, and limited access to education and healthcare.

Climate Adaptive Solutions

Climate adaptation strategies will be integrated to enhance resilience in vulnerable populations, particularly women, children, and the elderly.

Livelihood Ecosystems Development

Diversifying livelihood opportunities through enterprise development. Skills training for job creation and sustainable income sources.

Gender Sensitive Strategies

Develop gender-sensitive strategies to tackle poverty and uplift women through tailored coaching modules.

Expected Outcomes



100% of participants will be supported and linked to government schemes.



Increased asset holdings by 25% for over 85% of participants.



100% will engage in income-generating activities



More than 85% expected to see a 30% income increase.

Intervention districts and Mandals for TGILP

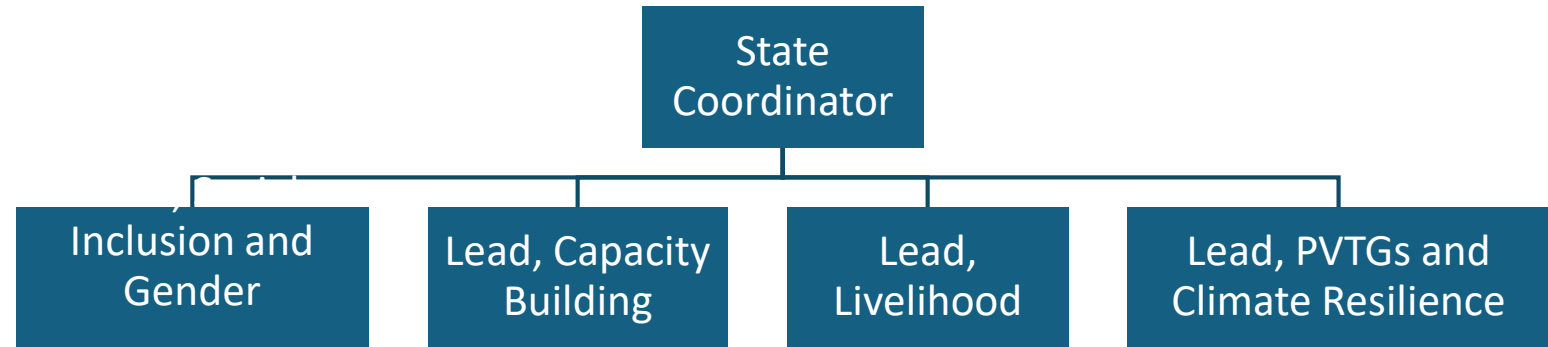
Sl.No.	District	Poverty Headcount Ratio
1	Narayanpet	10.27%
2	Mulugu	6.33%
3	Nagarkurnool	5.95%
4	Vikarabad	12.50%
5	Kumuram Bheem Asifabad	16.59%
	Telangana	5.88%

Rationale for selection:

- High tribal populations, including PVTGs like the *Kolams, Thotis and Chenchus*,
- Socially and economically backward
- Facing challenges in having sustainable livelihoods
- Limited Resources

TGILP Implementation Arrangement

**State Programme
Management
Unit**



Project Associate

**District Programme
Implementation
Unit**

4 District Coordinators assigned
across the 5 districts

**Mandal Programme Implementation
Unit**

1 Mandal Coordinator for each
of the selected Mandal





Community Cadres

Coaches (CRPs)

Implementation Partners



Lead Partner to technically support SERP and fund its technical partners to bolster technical assistance to meet the objectives of TGILP

			
<p>Setting up Program Management Units for the TGILP and support the TGSRLM in co-designing and implementation of the TGILP.</p>	<p>Provide support in conducting poverty and livelihood assessment and promotion and strengthening of Livelihoods.</p>	<p>Conduct a process evaluation of the TGILP</p>	<p>Provide coaching and training modules (CB Materials)</p>



Thank you!!